

OWNER/DEVELOPER

C & C Development Group, L.L.C.
an Oklahoma Limited Liability Company
P.O. Box 265
Jenks, Oklahoma 74037
918.260.6578

Planned Unit Development No. 119

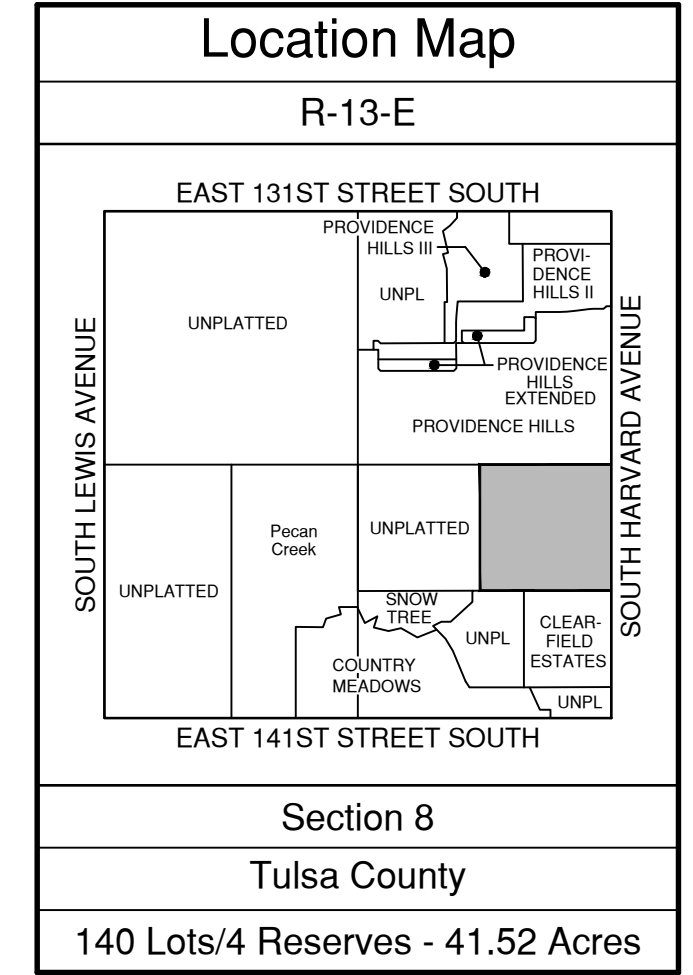
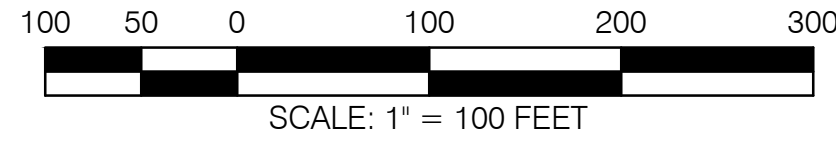
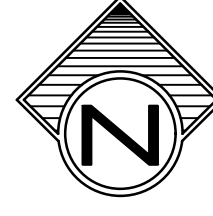
Torrey Lakes

A subdivision in the City of Jenks, being a part of the SE/4 of Section 8, Township 17 North, Range 13 East, of the Indian Base and Meridian, Tulsa County, State of Oklahoma

ENGINEER / SURVEYOR

Tulsa Engineering & Survey Associates, Inc.
an Oklahoma corporation
9810 East 42nd Street South, Suite 100
Tulsa, Oklahoma 74146
918.252.9621

CERTIFICATE OF AUTHORIZATION NO. 531
RENEWAL DATE: JUNE 30, 2021



Lot Areas table with columns: Lot, Area (S.F.), Lot, Area (S.F.), Lot, Area (S.F.). It lists 68 lots and their corresponding areas in square feet, organized into blocks 1 through 4.

Legend: B/L = Building Line, Res. = Reserve, B/L & U/E = Building Line and Utility Easement, U/E = Utility Easement, Right-of-Way = Right-of-Way dedicated by this plat, L.N.A. = Limits of No Access, Esmt. = Easement. Monument Notes: A 5/8" x 18" deformed bar with a yellow plastic cap stamped "CA 531" to be set at all plat boundary corners... Basis of Bearings: The non-astronomic bearings for this plat are based on an assumed bearing of S 00°13'55"W... Benchmark: Chiseled "X" on top of curb... Backflow Preventer Valve: If the actual finished floor elevation is lower than one (1) foot above the upstream sanitary sewer manhole top of rim elevation...

Curve Table with columns: Curve #, Delta, Radius, Length, Chord Direction, Chord Length. It lists 44 curves (C1-C44) with their respective geometric data for the subdivision.

FINAL PLAT
CERTIFICATE OF APPROVAL
I hereby certify that this plat was approved by the Jenks City Council
MAYOR - VICE MAYOR
This approval is void if the above signature is not endorsed by the City Manager.
CITY MANAGER