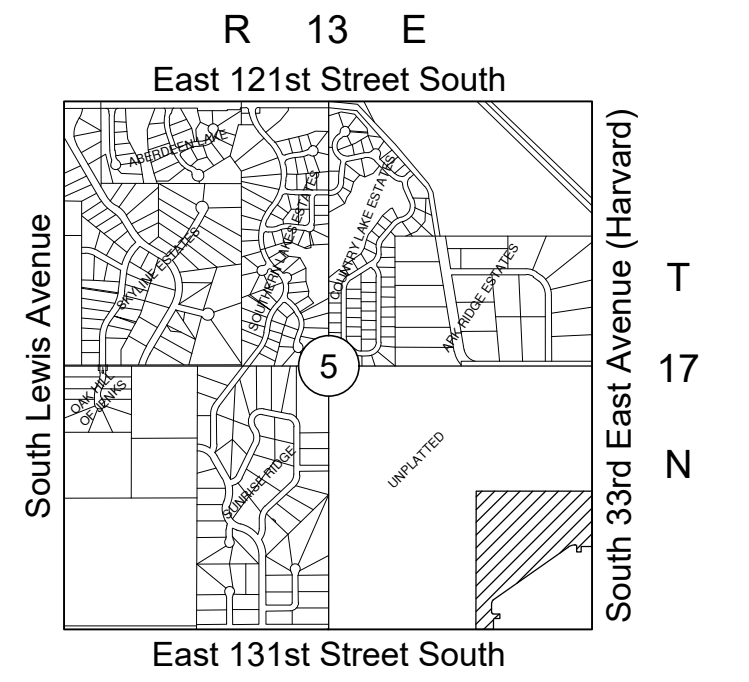


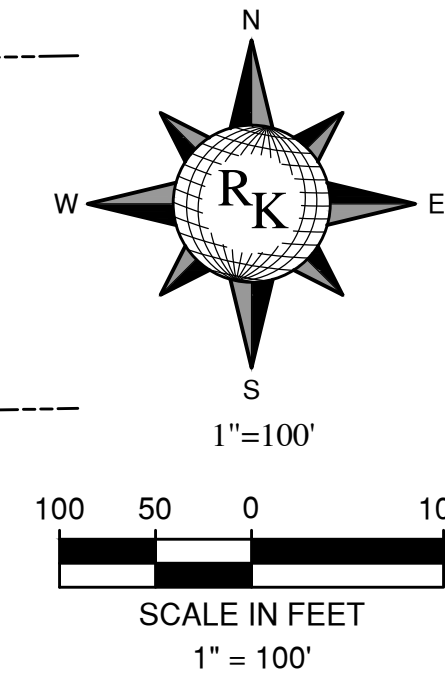
# FRAZIER MEADOWS I

PLANNED UNIT DEVELOPMENT NO. 116  
PART OF THE SE/4 OF SECTION 5, TOWNSHIP 17 NORTH, RANGE 13 EAST,  
AN ADDITION TO THE CITY OF JENKS, TULSA COUNTY, OKLAHOMA  
8 BLOCKS, 100 LOTS



LOCATION MAP

— FRAZIER MEADOWS I



## LEGAL DESCRIPTION

A TRACT OF LAND BEING IN PART OF THE SOUTHEAST QUARTER OF THE SOUTHEAST QUARTER (SE/4, SE/4) OF SECTION FIVE (5), TOWNSHIP SEVENTEEN (17) NORTH, RANGE THIRTEEN (13) EAST OF THE INDIAN BASE AND MERIDIAN, CITY OF JENKS, TULSA COUNTY, STATE OF OKLAHOMA, MORE PARTICULARLY DESCRIBED AS FOLLOWS:

COMMENCING AT THE SOUTHEAST CORNER OF SAID SECTION 5; THENCE S88°52'25"W ALONG THE SOUTH LINE OF SAID SECTION 5 FOR A DISTANCE OF 1322.00 FEET TO A POINT; THENCE N01°04'54"W FOR A DISTANCE OF 50.00 FEET TO THE POINT OF BEGINNING; THENCE N01°04'54"W FOR A DISTANCE OF 1518.00 FEET; THENCE N88°51'08"E FOR A DISTANCE OF 1272.00 FEET; THENCE S01°04'54"E FOR A DISTANCE OF 909.76 FEET; THENCE S88°55'06"W FOR A DISTANCE OF 170.00 FEET; THENCE N01°04'54"W FOR A DISTANCE OF 25.68 FEET; THENCE AROUND A CURVE TO THE LEFT, WITH A RADIUS OF 13.00 FEET, A LENGTH OF 20.42 FEET, A CHORD DISTANCE OF 18.38 FEET, AND A CHORD BEARING OF N46°04'54"W; THENCE S88°55'06"W FOR A DISTANCE OF 47.67 FEET; THENCE AROUND A CURVE TO THE RIGHT WITH A RADIUS OF 13.00 FEET, A LENGTH OF 6.87 FEET, A CHORD DISTANCE OF 6.79 FEET, AND A CHORD BEARING OF S73°46'55"W; THENCE AROUND A CURVE TO THE RIGHT, WITH A RADIUS OF 75.00 FEET, A LENGTH OF 115.05 FEET, A CHORD DISTANCE OF 104.09 FEET, AND A CHORD BEARING OF N72°24'34"W; THENCE S53°46'51"W FOR A DISTANCE OF 870.44; THENCE S01°08'43"E FOR A DISTANCE OF 50.00 FEET; THENCE S88°51'17"W FOR A DISTANCE OF 19.00 FEET; THENCE AROUND A CURVE TO THE LEFT, WITH A RADIUS OF 13.00 FEET, A LENGTH OF 20.41 FEET, A CHORD DISTANCE OF 18.37 FEET, AND A CHORD BEARING OF S43°53'12"W; THENCE S01°04'54"E FOR A DISTANCE OF 107.01 FEET; THENCE S88°51'17"W FOR A DISTANCE OF 190.00 FEET TO THE POINT OF BEGINNING. AREA CONTAINING 32.51 ACRES, MORE OR LESS.

BLOCK 1 SQUARE FEET	
LOT NO.	SQ. FT.
1	8,756.68
2	7,560.00
3	7,560.00
4	7,560.00
5	7,560.00
6	7,560.00
7	8,460.00
8	7,560.00
9	7,560.00
10	7,560.00
11	7,560.00
12	9,360.01
13	7,560.00
14	7,098.73

BLOCK 2 SQUARE FEET	
LOT NO.	SQ. FT.
1	7,200.00
2	7,200.00
3	7,200.00
4	7,264.77
5	13,981.95
6	14,012.47
7	7,324.18
8	7,200.00
9	7,200.00
10	7,200.00
11	7,200.00
12	7,200.00
13	7,200.00
14	13,866.22
15	11,065.93
16	7,200.00
17	7,200.00
18	7,200.00
19	7,200.00
20	7,367.36
21	10,392.43
22	10,631.89
23	8,400.00

BLOCK 3 SQUARE FEET	
LOT NO.	SQ. FT.
1	9,724.71
2	7,800.00
3	7,800.00
4	7,800.00
5	7,800.00
6	7,800.00
7	7,800.00
8	7,800.00
9	7,800.00
10	7,800.00
11	9,063.73
12	10,189.70
13	8,765.11
14	8,765.11
15	8,765.11
16	8,765.11
17	8,765.11
18	8,765.11
19	8,765.11
20	8,765.11
21	8,765.11
22	8,765.11
23	16,279.72

BLOCK 4 SQUARE FEET	
LOT NO.	SQ. FT.
1	6,849.14
2	6,818.67
3	7,486.64
4	6,394.50
5	7,486.64
6	6,394.50
7	7,486.64
8	6,394.50
9	7,486.64
10	6,394.50
11	8,159.61
12	6,685.97

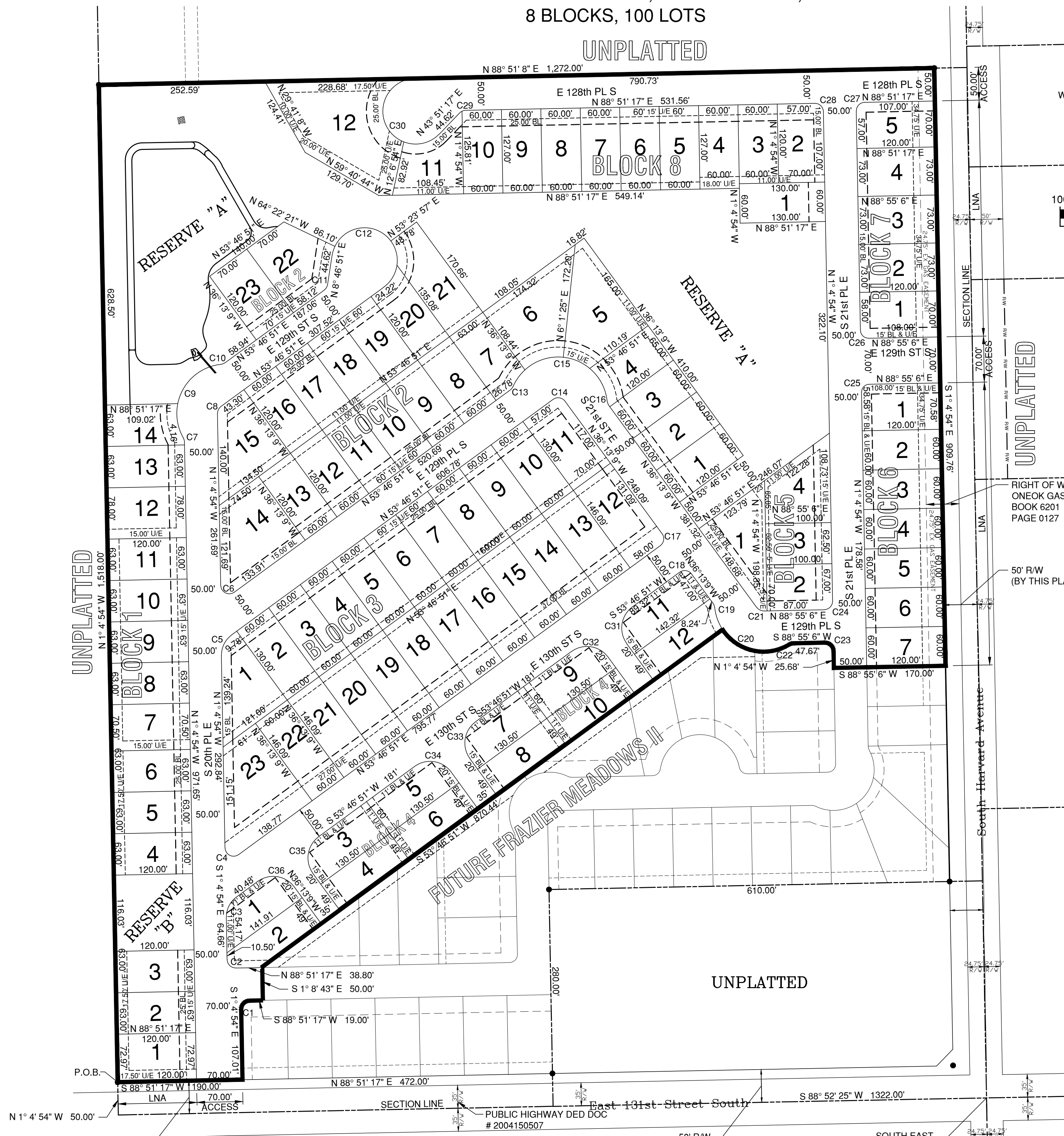
BLOCK 5 SQUARE FEET	
LOT NO.	SQ. FT.
1	10,781.39
2	6,963.73
3	6,250.00
4	10,104.85

BLOCK 6 SQUARE FEET	
LOT NO.	SQ. FT.
1	8,438.32
2	7,200.00
3	7,200.00
4	7,200.00
5	7,200.00
6	7,200.00
7	7,200.00

BLOCK 7 SQUARE FEET	
LOT NO.	SQ. FT.
1	8,369.10
2	8,760.00
3	8,760.00
4	8,760.00
5	8,363.83

BLOCK 8 SQUARE FEET	
LOT NO.	SQ. FT.
1	7,800.00
2	8,363.64
3	7,200.00
4	7,620.00
5	7,620.00
6	7,620.00
7	7,620.00
8	7,620.00
9	7,620.00
10	7,617.90
11	8,978.61
12	23,285.91

CURVE DATA TABLE				
NO.	RADIUS	CURVE LENGTH	CHORD LENGTH	DELTA
C1	13.00'	20.41'	18.37'	89°56'11"
C2	13.00'	20.43'	18.39'	90°03'49"
C3	37.00'	35.43'	34.09'	54°51'46"
C4	13.00'	28.39'	23.08'	125°08'14"
C5	38.00'	36.39'	35.01'	54°51'46"
C6	13.00'	28.39'	23.08'	125°08'14"
C7	13.00'	6.57'	6.50'	28°57'18"
C8	13.00'	12.45'	11.98'	54°51'46"
C9	75.00'	149.34'	125.96'	114°05'25"
C10	13.00'	6.87'	6.79'	30°16'22"
C11	13.00'	10.21'	9.95'	44°59'60"
C12	50.00'	196.35'	92.39'	224°59'60"
C13	13.00'	6.87'	6.79'	30°16'22"
C14	13.00'	20.42'	18.38'	89°59'60"
C15	75.00'	197.06'	145.07'	150°32'43"
C16	13.00'	6.87'	6.79'	30°16'22"
C17	13.00'	20.42'	18.38'	89°59'60"
C18	13.00'	20.42'	18.38'	90°00'00"
C19	13.00'	6.87'	6.79'	30°16'22"
C20	75.00'	151.07'	126.79'	115°24'29"
C21	13.00'	12.45'	11.98'	54°51'46"
C22	13.00'	6.87'	6.79'	30°16'22"
C23	13.00'	20.42'	18.38'	90°00'00"
C24	13.00'	20.42'	18.38'	89°59'60"
C25	12.00'	18.85'	16.97'	90°00'00"
C26	12.00'	18.85'	16.97'	89°59'60"
C27	13.00'	20.41'	18.37'	89°56'11"
C28	13.00'	20.43'	18.39'	90°03'49"
C29	13.00'	10.21'	9.95'	44°59'60"
C30	50.00'	196.35'	92.39'	224°59'60"
C31	40.00'	62.83'	56.57'	90°00'00"
C32	40.00'	62.83'	56.57'	90°00'00"
C33	40.00'	62.83'	56.57'	90°00'00"
C34	40.00'	62.83'	56.57'	90°00'00"
C35	40.00'	62.83'	56.57'	90°00'00"
C36	40.00'	62.83'	56.57'	90°00'00"



**FINAL PLAT**  
CERTIFICATE OF APPROVAL

I hereby certify that this plat was approved by the Jenks City Council on \_\_\_\_\_

MAYOR - VICE MAYOR \_\_\_\_\_

This approval is void if the above signature is not endorsed by the City Manager.

CITY MANAGER \_\_\_\_\_

**MONUMENT NOTES**

3/8" IP WITH CAP AT ALL LOT CORNERS

**BENCHMARK**

THE DATUM IS NAVD88

**OWNER**

Frazier Meadows, LLC  
10545 South Memorial Drive  
Tulsa, Oklahoma 74133

**ENGINEER**

RK and Associates, PLC  
4815 South Harvard Ave. Ste. 290  
Tulsa, Oklahoma 74135  
Richard Kosman, P.E.  
Phone: 918(277-4784)  
rkosman@sbcglobal.net  
Certificate of Authorization No. 4831  
Expires June 30, 2021

**SURVEYOR**

Wade Bennett, PLS  
Bennett Surveying, Inc.  
P.O. Box 848  
Chouteau, Oklahoma 74337  
Phone: 918(476-7484)  
Certificate of Authorization No. 4502  
Expires June 21, 2021

- LEGEND**
- U/E = UTILITY EASEMENT
  - W/E = WATER LINE EASEMENT
  - L/E = LANDSCAPE EASEMENT
  - R/W = RIGHT OF WAY
  - BL = BUILDING LINE
  - LNA = LIMITS OF NO ACCESS
  - ACC = LIMITS OF ACCESS
  - POB = POINT OF BEGINNING
  - ODE = OVERLAND DRAINAGE EASEMENT
  - F/E = FENCING EASEMENT
  - P/RW = PIPE LINE RIGHT OF WAY
  - R/W DED = RIGHT OF WAY DEDICATION PER COVENANTS



FINAL PLAT