



P.U.D. 16

PLAT No.  
**6096**

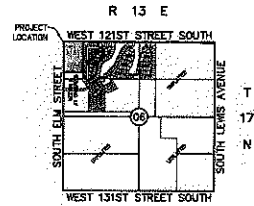
# Yorktowne Village

A SUBDIVISION IN THE CITY OF JENKS, TULSA COUNTY, OKLAHOMA BEING A PART OF THE NW/4 OF SECTION SIX (6), TOWNSHIP 17 NORTH, RANGE 13 EAST, OF THE INDIAN BASE AND MERIDIAN.



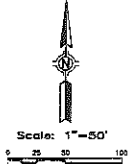
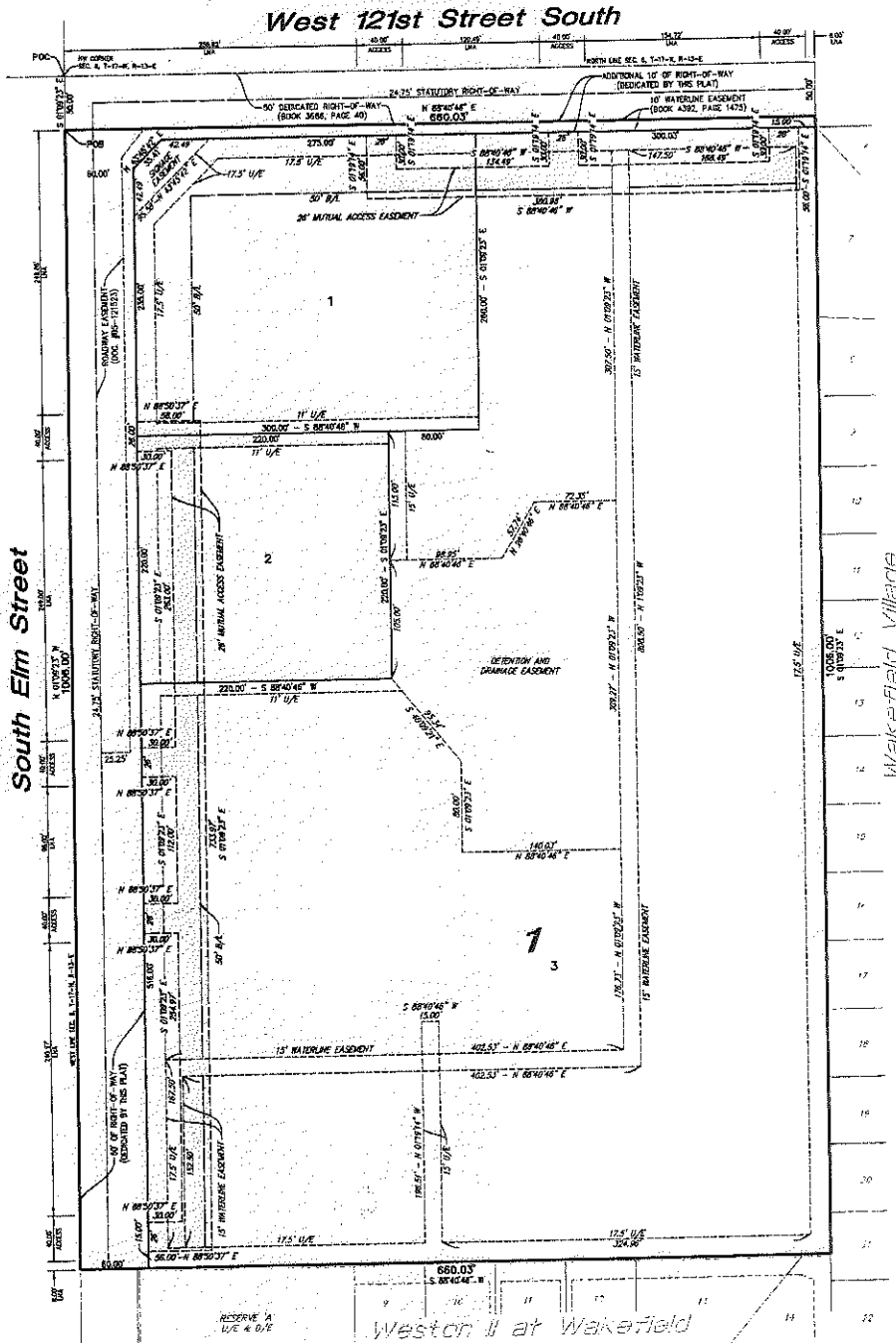
**Owner/Developer**  
 SOUTH RIVER TRADING, LLC  
 12010 S ELM STREET  
 JENKS, OK 74037  
 PHONE: (918) 296-0700  
 MR. CURT ROBERTS

**Engineer/Surveyor**  
 HRADOK, INC.  
 1913 WEST TACOMA, SUITE-C  
 BROKEN ARROW, OKLAHOMA 74012-1472  
 PHONE: (918) 258-3737  
 FAX: (918) 258-2554  
 C.A.#3643 EXPIRES JUNE 30, 2007



**Location Map**  
 SCALE: 1"=2000'

Subdivision Contains Three (3) Lots in One (1) Block  
 15.00 Acres



- Legend**
- B/L BUILDING LINE
  - U/E UTILITY EASEMENT
  - LNA LIMITS OF NO ACCESS
  - MAE MUTUAL ACCESS EASEMENT

**Basis of Bearings**  
 BEARINGS BASED ON A PLATTED BEARING OF S 01°29'21" E ALONG THE WEST LINE OF "WAKEFIELD VILLAGE," A SUBDIVISION IN THE CITY OF JENKS, TULSA COUNTY, STATE OF OKLAHOMA, RECORDED AS PLAT NO. 5503.

**Monumentation**  
 ALL CORNERS SHOWN HEREON WERE SET USING A 5/8" DIA. 16" STEEL PIN WITH A PLASTIC CAP STAMPED "PLS 1283" AT ALL CORNERS.

**Benchmark**  
 5/8" REBAR-1 1/2" ALUMINUM CAP-FULSH-STAMPED "308", SET S.E. OF THE INTERSECTION OF 121ST ST. AND PEDRIA AVE. ELEV=722.622 (MAY 1988)

**Notes**  
 ALL STREET RIGHT-OF-WAY SHALL BE DEDICATED AS PUBLIC STREETS BY THIS PLAT.  
 ADDRESSES SHOWN ON THIS PLAT WERE ACCURATE AT THE TIME THIS PLAT WAS FILED. ADDRESSES ARE SUBJECT TO CHANGE AND SHOULD NEVER BE RELIED ON IN PLACE OF LEGAL DESCRIPTION.  
 ALL WATER AND SANITARY SEWER SERVICES WILL BE SURPLIED AND MAINTAINED BY THE CITY OF JENKS.

STATE OF OKLAHOMA  
 COUNTY OF TULSA

I, Garlene Wilson, Tulsa County Clerk, do and for the County and State above named, do hereby certify that the foregoing is a true and correct copy of the instrument now on file in my office.

Dated this \_\_\_\_\_ day of \_\_\_\_\_, 2007.  
 GARLENE WILSON, Tulsa County Clerk  
 Deputy

**CERTIFICATE**

I hereby certify that all real estate taxes levied in this plat have been paid as reflected by the current tax rolls. Security as required has been provided in the amount of \$ \_\_\_\_\_ per tract parcel no. \_\_\_\_\_ to be applied in 20 \_\_\_\_\_ terms. This certificate is NOT to be construed as payment of 20 \_\_\_\_\_ taxes in full but is given in order that this plat may be filed on record. 20 \_\_\_\_\_ (Seal of Tulsa County Clerk)

Dated \_\_\_\_\_  
 Paula R. [Signature]  
 Tulsa County Clerk

**FINAL PLAT**  
 CERTIFICATE OF APPROVAL

I hereby certify that this plat was approved by the Jenks City Council on February 20, 2007

MAYOR - YICK MAYOR

This approval is void if the above signature is not endorsed by the City Manager.

[Signature]  
 CITY MANAGER

Weston II at Wakefield

