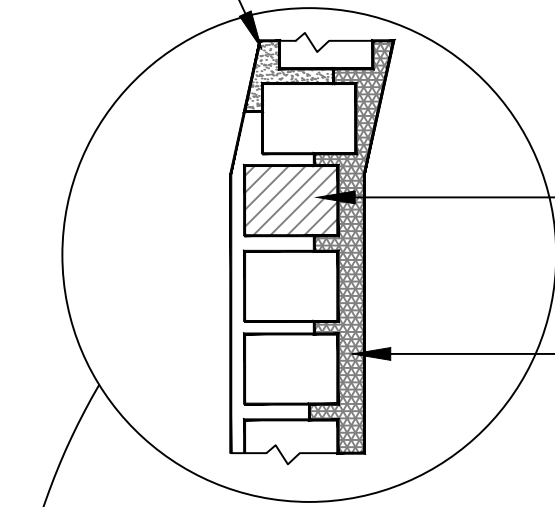


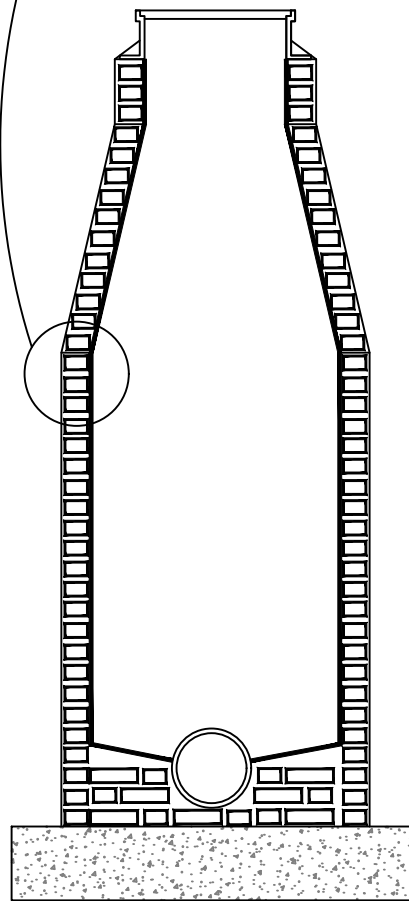
PRESSURE APPLIED GROUT



RAPID-SET HAND APPLIED
PATCHING COMPOUND,
OCTOCRETE, STRONG SEAL
QSR OR APPROVED EQUAL

SPRAY APPLIED EPOXY (OR APPROVED
EQUAL) COATING 1" MIN. THICKNESS (NUMBER
OF COATS PER MANUFACTURER'S
SPECIFICATION). APPLY AN ADDITIONAL 1/2"
EPOXY (OR APPROVED EQUAL) COATING FOR
MANHOLE DEPTHS OVER 12' AT NO
ADDITIONAL COST*

*A FIBERGLASS SLEEVE OR A POLYMER
INTERIOR COATING MAY BE USED UPON CITY
OF JENKS APPROVAL.



NOTES:

1. MANHOLE SHALL BE THOROUGHLY CLEANED TO MEET MANUFACTURER'S SPECIFICATIONS PRIOR TO REHABILITATION.
2. ACTIVE LEAKS SHALL BE STOPPED USING PRODUCTS SPECIFICALLY DEVELOPED FOR THAT PURPOSE.
3. MATERIALS SHALL BE PREPARED, MIXED AND PLACED ACCORDING TO MANUFACTURER'S RECOMMENDATIONS AND SPECIFICATIONS.
4. MATERIALS SHALL BE SPRAYED TO A MINIMUM UNIFORM THICKNESS. IF REQUIRED, SURFACE SHALL BE TROWELED TO ENSURE A CONSOLIDATED COATING AND LEAVE A SMOOTH SURFACE. TROWELING SHALL COMPACT MATERIAL INTO VOIDS AND CREVICES.
5. IF REQUIRED BY MANUFACTURER'S SPECIFICATIONS, A SECOND COAT SHALL BE APPLIED AFTER THE FIRST APPLICATION HAS TAKEN AN INITIAL SET, BUT NOT OVER 72 HOURS. TOTAL THICKNESS SHALL BE A MINIMUM OF 1".
6. STANDARD COATING THICKNESS SHALL BE 1". WHEN MANHOLE DEPTH EXCEEDS 12', AN ADDITIONAL 1/2" SHALL BE ADDED AT NO ADDITIONAL COST.

INTERIOR COATING SYSTEM
NOT TO SCALE

REVISION	BY	DATE	INTERIOR COATING FOR SANITARY SEWER MANHOLE STANDARD DETAILS	
			ENGINEERING DEPARTMENT	
			DATE: 4-11-22	STANDARD NO. SAN-05