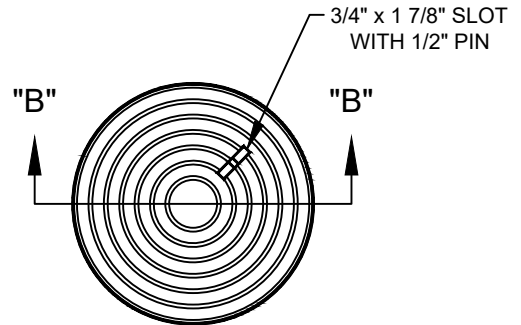
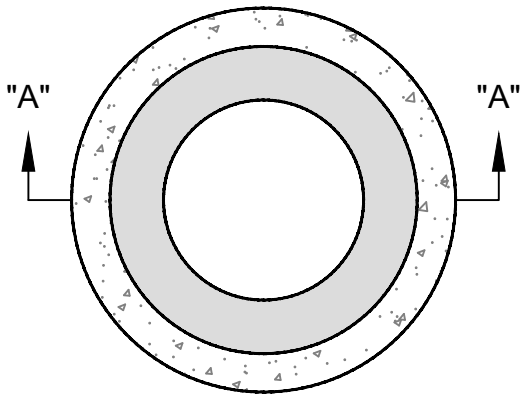


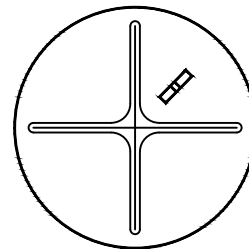
LAMP HOLE



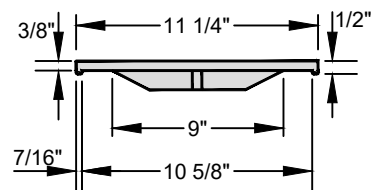
TOP OF COVER



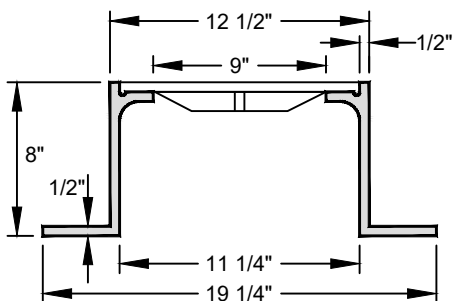
TOP OF FRAME



BOTTOM OF COVER



**SECTION "B" - "B"
LAMP HOLE COVER**



**SECTION "A" - "A"
LAMP HOLE FRAME**

REVISION	BY	DATE	LAMP HOLE WITH FRAME & COVER	
			STANDARD DETAILS	
			CITY OF JENKS OKLAHOMA	
			ENGINEERING DEPARTMENT	
			DATE: 4-11-22	STANDARD NO. SAN-09