

INTERIOR SURFACE  
OF MANHOLE WALL

QUICK-SETTING, HIGH  
EARLY STRENGTH  
HYDRAULIC CEMENT  
TO FILL HOLE CAVITY

ACYRL #60 BONDING  
AGENT OR EQUAL TO  
ALL INTERIOR SURFACES



UNDISTURBED EARTH

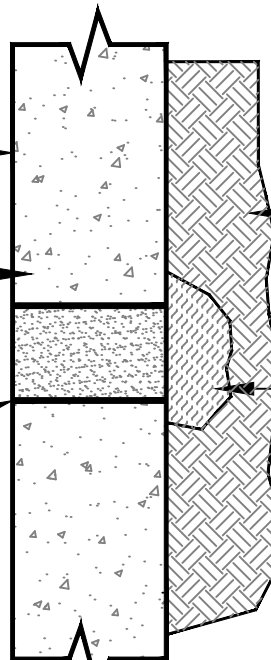
FILL EXTERIOR VOID WITH  
HYDRAULIC CEMENT OR  
GROUT AS REQUIRED

**PATCH HOLE DETAIL**

INTERIOR SURFACE OF  
PRECAST MANHOLE WALL

QUICK-SETTING, HIGH  
EARLY STRENGTH  
HYDRAULIC CEMENT  
TO FILL HOLE CAVITY

ACYRL #60 BONDING  
AGENT OR EQUAL TO  
ALL INTERIOR SURFACES



UNDISTURBED EARTH

FILL EXTERIOR VOID WITH  
HYDRAULIC CEMENT OR  
GROUT AS REQUIRED

**PLUG LIFT HOLE DETAIL**

REVISION	BY	DATE	<b>PATCH HOLE &amp; PLUG LIFT HOLE STANDARD DETAILS</b>	
			CITY OF JENKS OKLAHOMA	
			ENGINEERING DEPARTMENT	
			DATE: 4-11-22	STANDARD NO. SAN-12