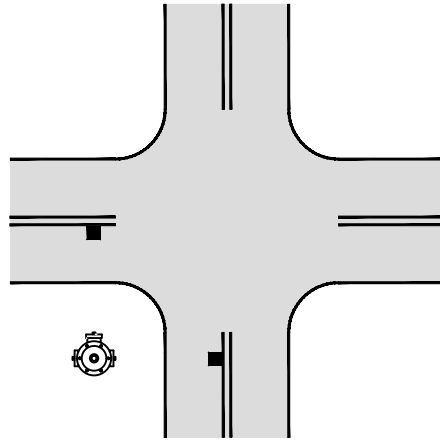
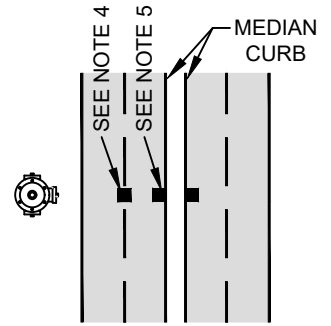


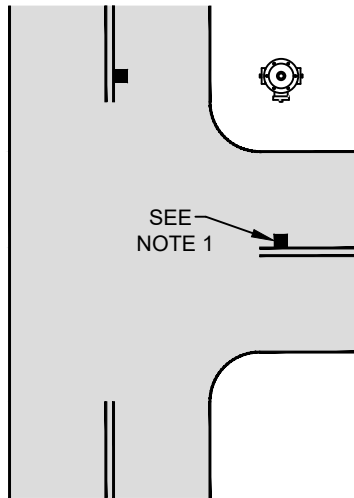
MIDBLOCK



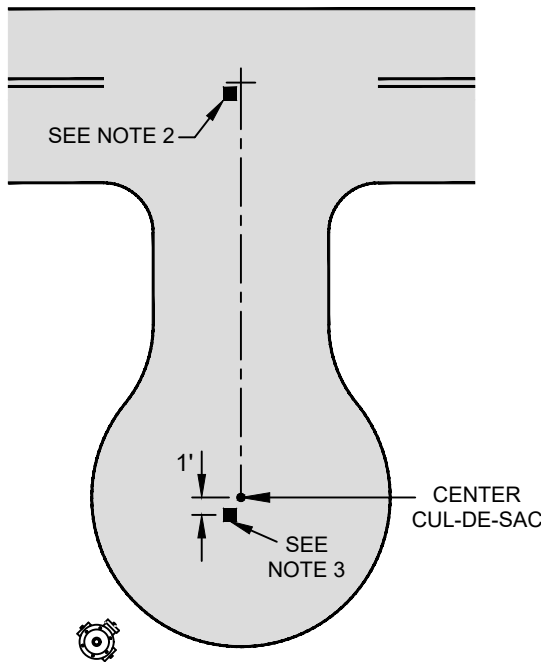
CROSS INTERSECTION



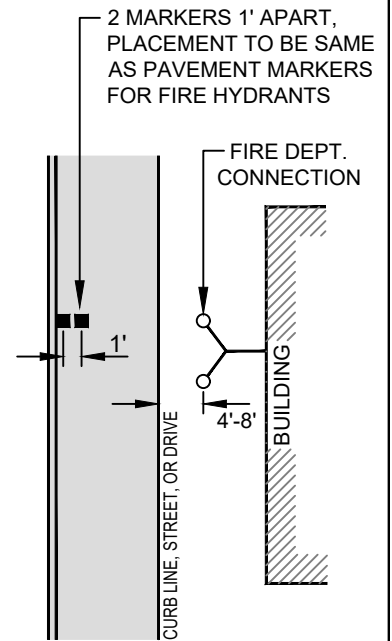
MIDBLOCK WITH RAISED MEDIAN



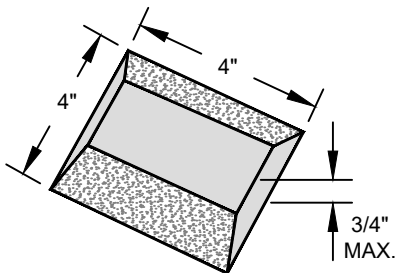
"T" INTERSECTION



CUL-DE-SAC



FIRE DEPARTMENT CONNECTION



PAVEMENT MARKER FOR FIRE HYDRANT

REFLECTIVE FACE COLOR: BLUE, TWO WAY

ASTM D4280 MARKER REQUIREMENTS

1. ASTM TYPE: E
2. ASTM COLOR: BB
3. ABRASION RESISTANCE: H COATED OR GLASS FACE ON BOTH SIDES.
4. FLEXURAL STRENGTH: F

NOTES:

1. MARKER NOT REQUIRED ON DEAD END STREETS WITHOUT FIRE HYDRANTS.
2. PLACE ON FIRE HYDRANT SIDE OF CENTERLINE.
3. NOT REQUIRED WHEN CUL-DE-SAC IS LESS THAN 250'.
4. TO BE PLACED IN LINE WITH SKIP LINE.
5. PLACE ON GUTTER OR ADJACENT TO CURB.

PAVEMENT MARKERS FOR FIRE HYDRANTS STANDARD DETAILS	
CITY OF JENKS, OKLAHOMA	
ENGINEERING DEPARTMENT	
DATE: 4-11-22	STANDARD NO. WAT-06