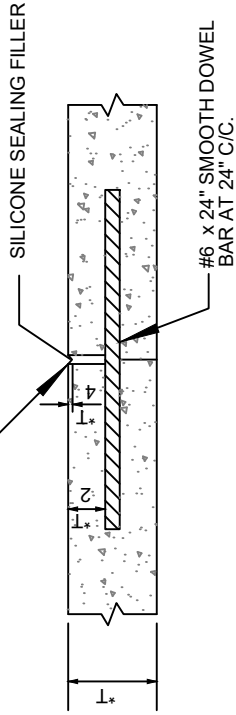
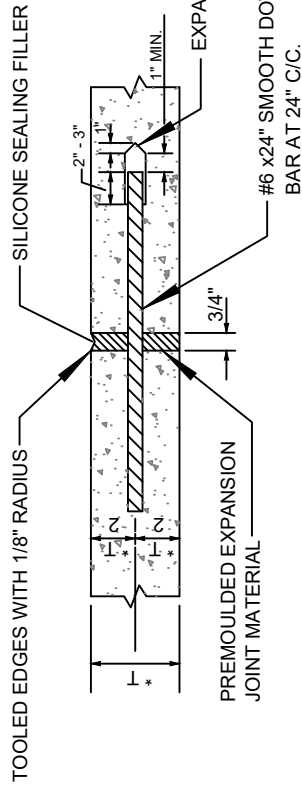


TOOLED EDGES WITH 1/8" RADIUS
OR SAWED JOINT

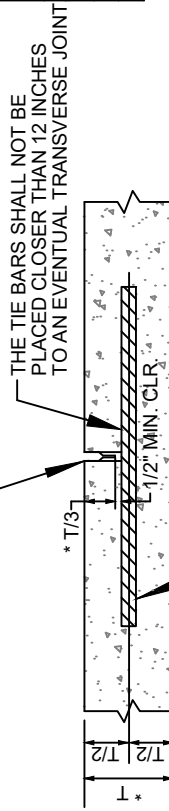


LONGITUDINAL OR TRANSVERSE CONTRACTION



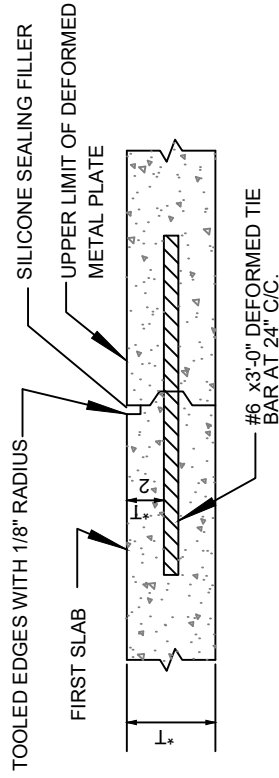
**TRANSVERSE
EXPANSION JOINT**

SEE DETAILS FOR SAWED AND SEALED
LONGITUDINAL JOINTS.

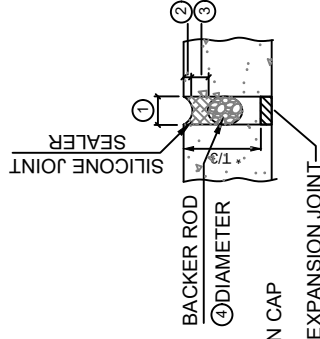


NO. 4 DEF. TIE BARS: 2'-6" LONG AT 2'-6" C/C.
TO BE SUPPORTED AT EACH END BY AN APPROVED
BAR SUPPORT OR PLACED BY AN APPROVED
MECHANICAL DEVICE INTO THE FRESH CONCRETE.

LONGITUDINAL JOINT

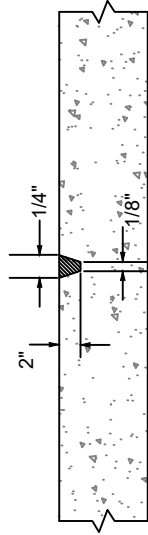


LONGITUDINAL OR TRANSVERSE KEYWAY CONSTRUCTION JOINT



**SEALED EXPANSION
JOINT**

EXPANSION JOINT TREATMENT TABLE		SEALANT		BACKER ROD	
JOINT WIDTH (1)	INCHES	RECESS DEPTH (2)	INCHES	SILICONE SEALANT THICKNESS (3)	INCHES
1/2	1/2	1/4	1/4	1/4	5/8
3/4	3/4	1/4	3/8	3/8	7/8
1	1-1/2	3/8	1/2	1/2	1-1/4
1-1/2	2	1/2	1/2	1/2	2
2	2-1/2	1/2	3/4	3/4	2-1/2



SAWED TRANSVERSE JOINT

NOTES:

- ONE HALF OF SMOOTH DOWEL BAR ACROSS TRANSVERSE JOINTS SHALL BE COATED WITH ASPHALT OR GREASE TO PREVENT BOND WITH CONCRETE.
- SMOOTH DOWEL BARS ACROSS EXPANSION JOINTS SHALL BE PROVIDED WITH EXPANSION CAPS AND COATED WITH ASPHALT OR GREASE AS NOTED ABOVE.
- GROOVES IN JOINTS MAY BE FORMED BY: (1) TEMPORARY EMBEDMENT OF A SUITABLE MANDREL, (2) INSTALLATION OF THIN STRIP OF PREMOULDED JOINT FILLER MATERIAL, (3) SAWING THE PAVEMENT AFTER THE CONCRETE HAS HARDENED.
- VIBRATORY COMPACTION OF JOINTS REQUIRED.
- * T = THICKNESS.
- DOWELS SHALL CONFORM TO AASHTO M31, GRADE 40 OR 60.
- CAGED DOWELS ARE ACCEPTABLE FOR TRANSVERSE JOINTS.

CONCRETE PAVEMENT JOINTS

STANDARD DETAILS

CITY OF JENKS, OKLAHOMA

ENGINEERING DEPARTMENT

DATE: 4-11-22

STANDARD NO.

STRT-17

REVISION	BY	DATE